

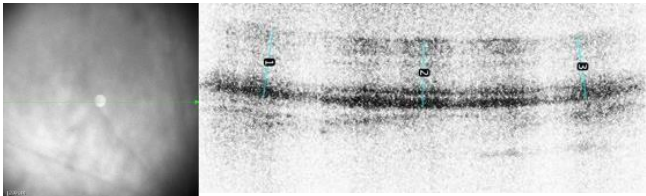
可持式视网膜健康监测仪 Portable Retina OCT & Fundus Camera

轻便且操作简单的低成本视网膜监测仪器，为智慧远程医疗做准备

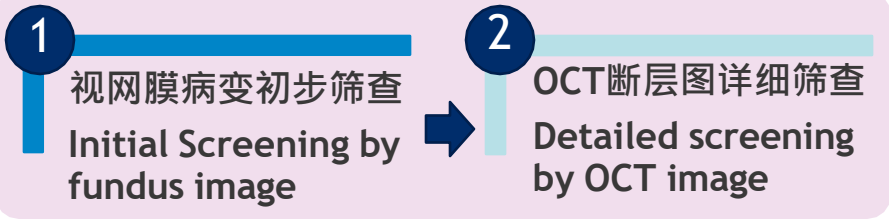
Portable and easy-to-operate retina monitoring device, preparing for next generation of smart tele-ophthalmology



可持式视网膜健康监测仪
Portable Retina OCT & Fundus Camera



小鼠眼底图与视网膜断层图
Fundus and OCT image of mouse



OCT结合眼底相机，同时提供视网膜2D成像与断层成像

OCT & Fundus photography, providing retinal 2D image & cross-sectional image at the same time

- 点扫技术，实时显示
Point-scantechology, real time display
- 操作简便，便于定位疑似病变位置
Easy to operate. Easy to locate suspected lesions.

参数 Items	规格 Specifications
OCT视场 Field of View (OCT)	25×25°
屏幕分辨率 Resolution	512×512
横向分辨率 Lateral resolution	<20μm
轴向分辨率 Axial resolution	<8μm
扫描速率 A-scan rate	7.5 kHz
眼底镜视场 Field of View (Fundus)	40×40°

可持式视网膜健康监测仪，集合了视网膜光学相干断层扫描与眼底镜功能，更为直观地监测眼底健康并且获取特定位置的视网膜横切图。操作简单，可用于视网膜疾病的早期筛查与定期监测。

Portable retina health monitoring device, integrating retina OCT and fundus camera, can indicate retina health in a more straightforward way. It is easy to use, and readily offers early diagnosis and routine monitoring of retinal diseases