



KENNY CHAN
EMAIL: KENNYCHAN@ASTRI.ORG
TELL: +852 34062989

EYE GAZE TRACKING SYSTEM

WITH REMOTE CLICKING TECHNOLOGY

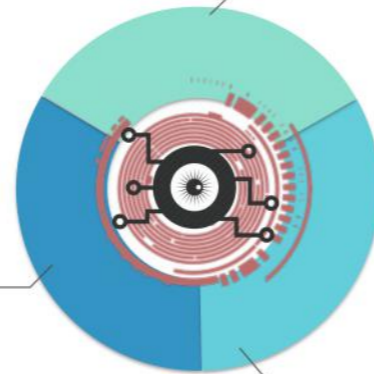
视线追踪系统

- 眼控输入
Eye Input Interface
- VR扩展
VR Extension
- 用户分析
User Analysis
- 疲劳监测
Fatigue Detection

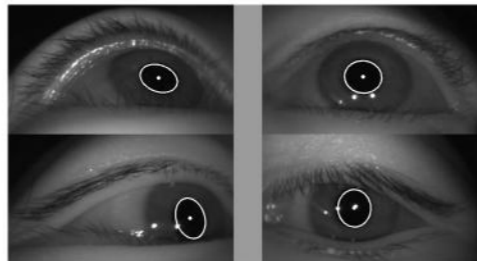


User statue detection, e.g. fatigue detection for save driving
人体状态监测, 例: 驾驶中的疲劳监测

User focus point detection, user behavior study, gaze object detection, and personalized education
人体注意点监测, 用户行为监测, 视线目标确定, 个性化教学



Eye input interface for gaming, eye gaze control, input interface
视线输入系统, 可用于游戏、视线控制输入设备

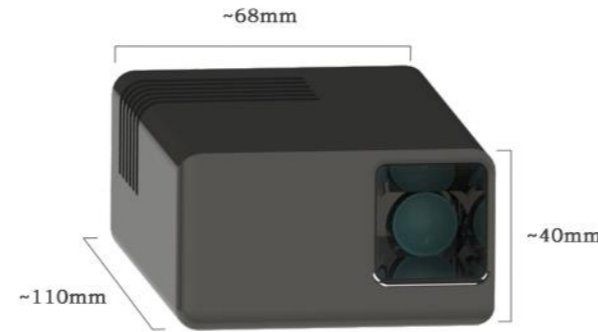


FOV 视场	65° horizontal	Calibration 校对	6 pts
Error 误差	±2° (hor)	Weight 重量	45g
Frame rate 帧数	≥ 30 fps		

2D LASER HOLOGRAPHIC PROJECTION MODULE

2D激光全息投影模组

- 高解析度
High Resolution
- 高亮度
High Brightness
- 低投射比
Small Throw Ratio
- 低散斑
Low Speckle

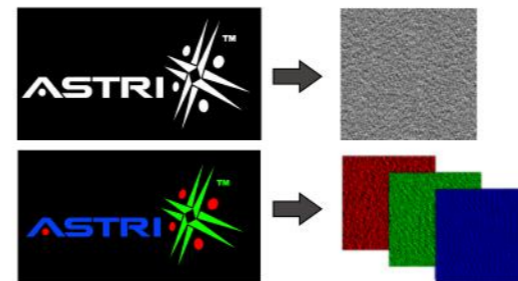


Variable laser wavelengths (Red, Green, Blue, UV)
适用于不同波长的激光 (红、绿、蓝、紫外)

Simple optical structure
光学结构简单

High signal noise ratio
高信噪比

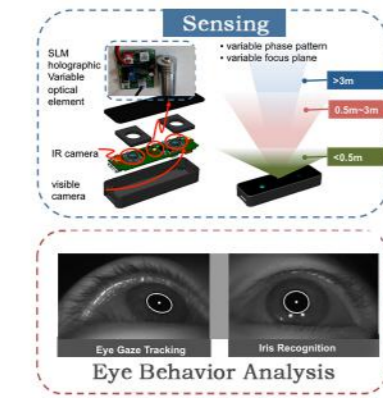
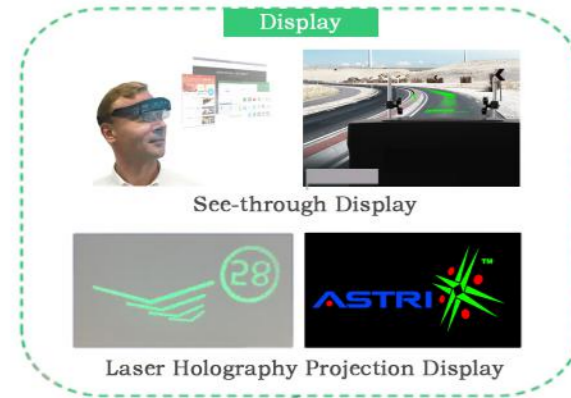
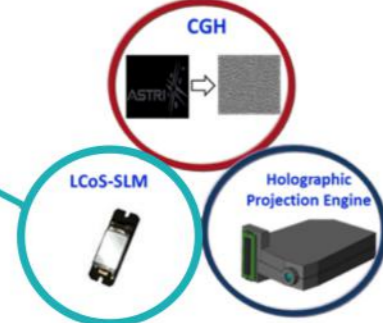
Wide throw angle with small throw ratio
宽投射角, 低投射比



INTELLIGENT PROJECTION DISPLAY PLATFORM

智能投影显示平台

显示+感测
Display + Sensing



LASER WINDSHIELD HEAD-UP-DISPLAY

THE SEE-THROUGH

激光汽车前挡抬头显示



- 高透视比 >80%
- 小体积 <4.5L
- 高亮度 >10,000 nits
- 远景深 >10m

Optical System	
Brightness (cd/m ²)	>10000nits
Eye Box Size (mm)	100*60mm ²
Virtual Image Size (inch)	100" @10m
Eye Relief	860mm
Contrast (on/off)	800:1
Volume	~4.5L
Input Power	12V

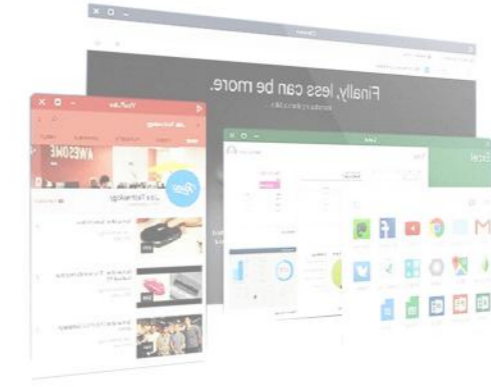
Embedded System	
Processor	Qualcomm Snapdragon 410 quad core
Connectivity	WiFi 802.11 a/b/g/n, Bluetooth 4.0
GPS	GPS, GLONASS
Audio	Built-in Speaker
Light sensor/9-axis Accelerometer	
OBDII (On-Board Diagnostic System)	

FOV 60° HEAD MOUNT DISPLAY (HMD)

WITH LARGE FOV AUGMENTED REALITY

大视场智能AR眼镜

- 增强现实 Augmented Reality
- 大视角 FOV=60°
- 双眼高分辨 1080p
- 头戴式 Wearable



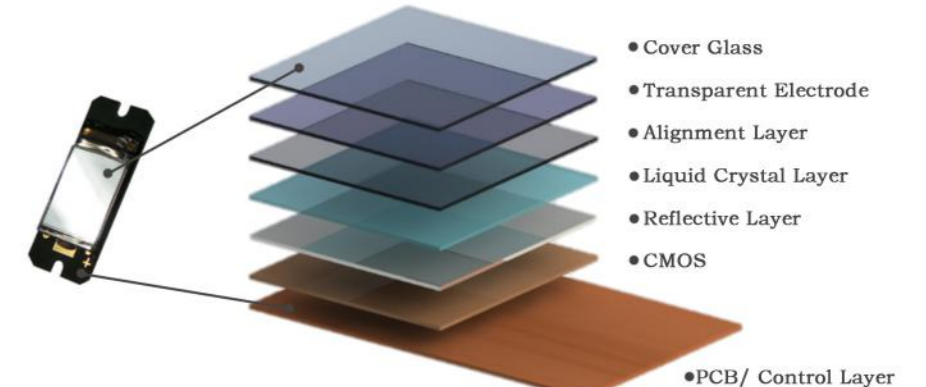
Optical Module	
LCoS Panel	0.39" 1080P
Resolution	1920*1080
Field of View(Degree)	60
Virtual Image Size(inch)	87" @2m
Eyebox	8mm
Eye relief	20mm
Light Source	RGB LED
Distortion	<1.5%
Optical Module Dimension(mm)	176x57x36
Embedded System	
Operating System	Android
Processor	Quad-core CPU
Stereoscopy Display	2 * 1920*1080
Audio	3.5mm stereo jack
Wireless connectivity	WiFi 802.11ac & BT 4.2BLE
Gyroscope	9-axis

LIQUID CRYSTAL ON SILICON PANEL

TAILOR-MADE PANEL

LCoS芯片

- 高对比度 High Contrast
- 高解析度 High Resolution
- 快速响应时间 Fast Response Time
- 高填充率 High Aperture Ratio



液晶模式 LC mode	反射式 Reflective	解析度 Resolution	1280 x 720
调制模式 Modulation	纯相位 (Phase-only)	像素大小 Pixel pitch	6.4 um
相位调制 Phase shift	0 ~ 2.5π @633nm	衍射效率 Diffraction efficiency	≥ 80%
填充率 Aperture ratio	>92%	响应时间 Response time	≤ 5ms